	RPM DECELERATOR (Engine Throttle controller)	RG1	23/03/10
			(GB) 2
			10.9118.00

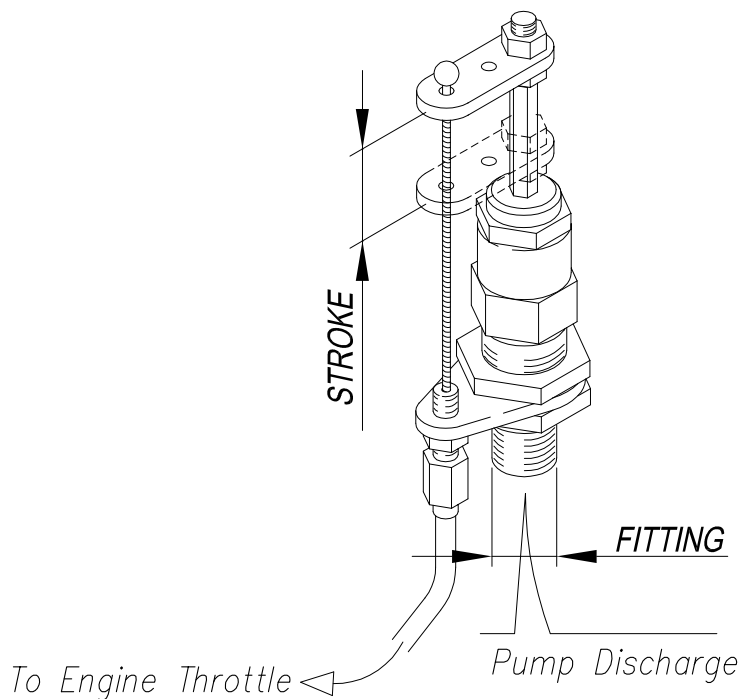


FEATURES

- Reduces engine RPM when pump is in by-pass resultant in reduced engine wear.
- Prolongs pump life by reducing potential fluid heat build-up while pump is in by-pass.
- Reduces fuel consumption because engine is not continually running at full RPM.
- Instant on/off response eliminating pressure delays at gun opening.

SPECIFICATIONS

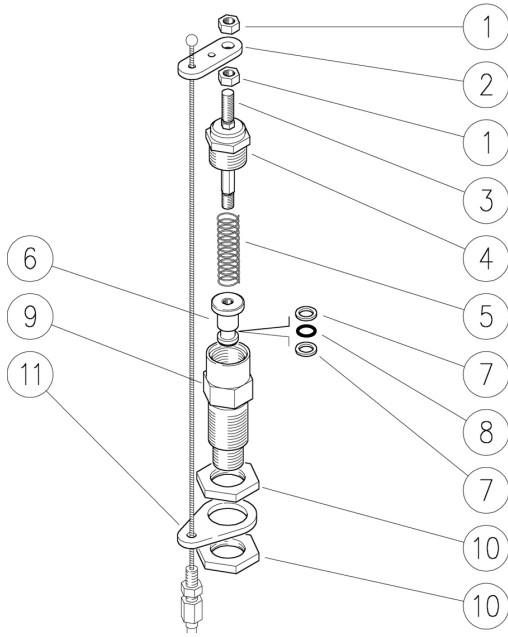
	29.0120.00	29.0130.00
RATED PRESSURE	250 bar – 25 MPa (3650 PSI)	
PERMISSIBLE PRESSURE	280 bar – 28 MPa (4050 PSI)	
ACTUATION PRESSURE MIN-MAX	15–36bar (220–520PSI) 1.5–3.6MPa	5–20bar (72.5–290PSI) 0.5–2 MPa
MAX. TEMPERATURE	160°C (320° F)	
MAX. WORKING TEMPERATURE	90°C (195° F)	
STROKE	7mm (0.275 in.)	14mm (0.55 in.)
FITTING SIZE	G1/4 M (BSP)	
WEIGHT	0.15 Kg (5.2 oz)	0.18 Kg (6.4 oz)



INSTALLATION: The RPM DECELERATOR valve will function in any position, however, a minimum number of bends should be in the throttle cable to insure smooth consistent operation. Install the RPM DECELERATOR into the discharge manifold port of the pump or with a T fitting between the pump and the unloader valve.

OPERATION: When the gun is closed (trigger released) the unloader valve will go into by-pass and drop the system pressure upstream the valve. This change in pressure moves the piston of the RPM DECELERATOR, reducing the tension on the throttle cable to permit the engine to idle. **NOTE:** The RPM DECELERATOR cannot be used with a pressure regulator (not unloader) as this kind of valve always maintains the working pressure in the system and will not give the required pressure drop to activate the piston of the decelerator.

29.0120.00 RG1 Throttle controller -7mm stroke



29.0130.00 RG1 Throttle controller -14mm stroke

Pos.	P/N	Description	Q.ty	K1	K2	K3	K4	
1	11.4524.00R	Hex. nut, M5	2					10
2	29.0125.61R	Cable hanger, z.pl.	1					5
3	29.0126.51R	Tie rod -RG1, Sst.	1					5
4	29.0122.31R	Plug, RG1 brass	1					5
5	30.0009.51R	Spring, 1,6x8,4x26 mm Sst.	1					10
5	29.0133.61R	Spring, 1,3x10x33 mm z.pl. (1)	1					10
6	29.0123.31R	Piston 7 mm brass	1					5
6	29.0132.31R	Piston RG1-14 mm brass (1)	1					3
7	10.4006.01R	Back-up ring, opn. 6,2x9x1,2 mm	2					10
8	10.3051.00R	O-ring, 1,78x6,07 mm Vi 70	1					10
9	29.0121.31R	Housing -RG1-7, 1/4M-3/8M Bsp brs.	1					5
9	29.0131.31R	Housing -RG1-14, 1/4M-3/8M Bsp brs. (1)	1					3
10	29.0171.31R	Nut, brass, 3/8F Bsp	2					50
11	29.0124.61R	Regulator plate, z.pl.	1					5

(1) 29.0130.00